

# Hunger in America 2006

## Livingston County Report

*Presented by*

*Gleaners Community  
Food Bank of  
Southeastern  
Michigan*





*nourishing communities by feeding hungry people*



*...a community effort*



- ❖ **Provide food and grocery items to 418 partner agencies across six counties**
- ❖ **Provide 802,247 pounds of food or 617,113 meals annually to hungry people in Livingston County.**
- ❖ **Engage the help of over 14,000 volunteers to help our mission**

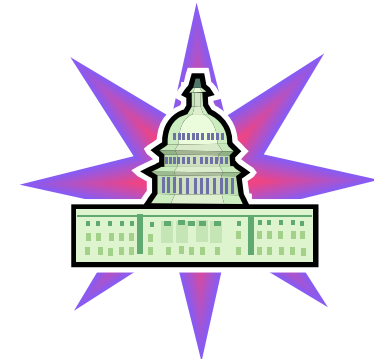
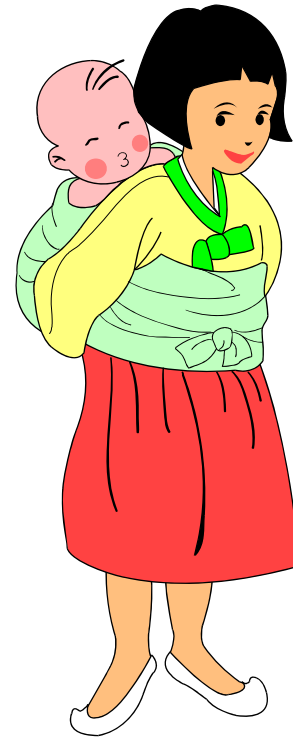
# Why Do this Study?



- How many people need food?
- Who are our customers?
- Why do people need food?
- What public programs do they use?

# Stakeholders –there are many

- Human Service Providers
- Policy Makers
- Donors
- Volunteers
- Tax Payers
- Food Industry
- Faith based Organizations
- Educators



# Most Comprehensive National Assessment of Hunger Ever

- 156 Food Banks
- 30,000 agencies
- 52,000 clients
- Provides county, state and national reports

Study Designed by  
Mathematica Policy Research, Inc. and implemented in partnership  
with Wayne State University

# Study Design and Process

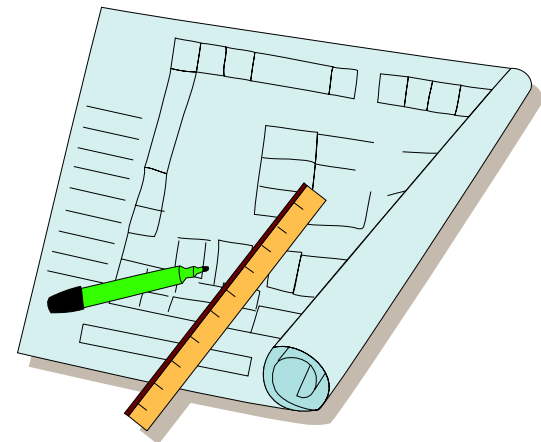
## *Livingston County*

### Partner Study

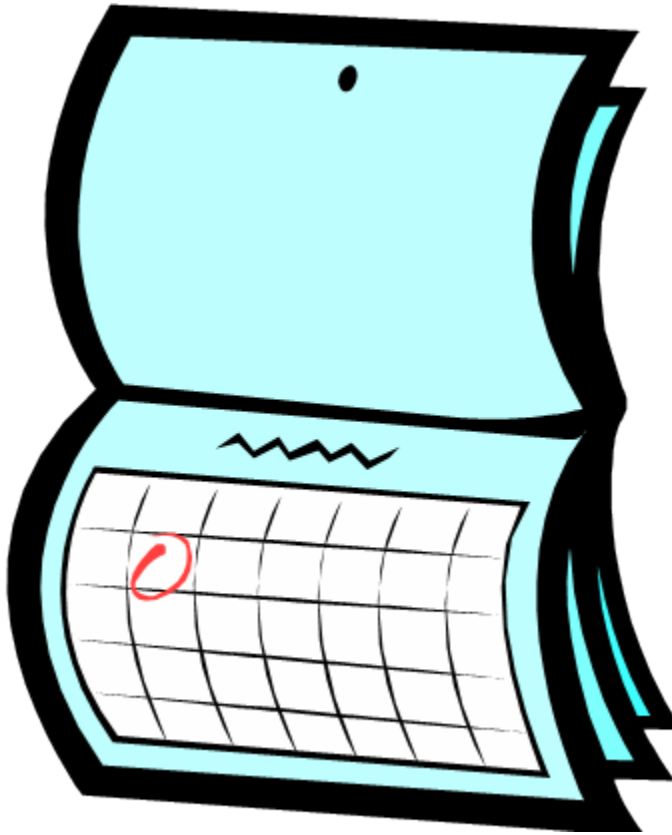
- Mail survey
- 26 responses

### Client Study

- 195 Personal Interviews



# *Timeline*



- Data Collected  
Jan-April, 2005
- Sluggish economic  
environment in MI
- Prior to Hurricanes  
Katrina and Rita

# What information did we get?

## *Agency Survey*

- Demand changes
- Capacity
- Volunteers

## *Client Interviews*

- Personal and Household data
- Demographics
- Food security
- Other resources



- **Gleaners Community Food Bank of Southeastern Michigan serves an estimated 8,900 different people in Livingston County annually.**
- **Approximately 1,900 different people receive assistance in any given week.**
- **3,293 Livingston County children are served through the food bank**

# Households

*Of those Livingston County households served by Gleaners Community Food Bank of Southeastern Michigan:*

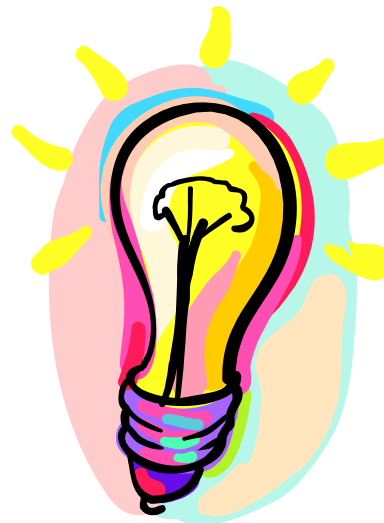


- 51% live at or below poverty level
- 27% include an elderly person
- 12% have no car
- 51% include children
- Average annual household income is \$18,640

Poverty Level is \$19,200  
for a family of four

# Difficult Choices

- 53% choose between food and utilities
- 43% choose between food and housing
- 34% choose between food and medical care



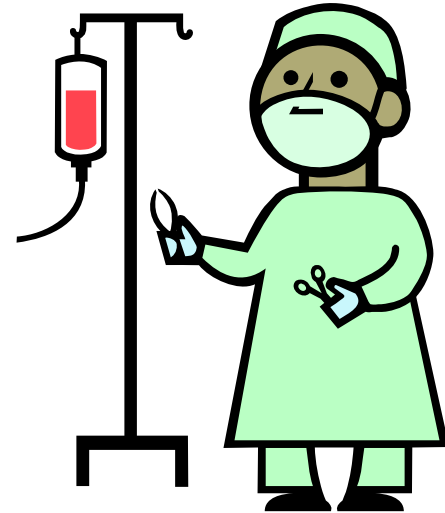
# WORK & EDUCATION

- 48% of households include at least one employed adult
- 16% of clients held managerial or professional jobs
- 42% of clients completed high school and 27% have some college or a two-year degree



# *Health*

- **23% of households have at least 1 person in poor health**
- **56% of clients have unpaid medical bills**
- **52% of households reported that sometimes or often they could not afford to eat balanced meals.**
- **19% have no medical insurance**



# Resources and Programs

**Of those households interviewed:**

- **21% use food stamps**
- **44% participate in W.I.C**
- **49% school lunch**
- **30% school breakfast**

# Increase in demand

- 86% of pantries, 50% of kitchens, and 100% of shelters reported an increase since 2001 in the number of people requesting food.
- 29% of pantries but none of the kitchens and shelters turned away clients last year because of lack of resources.

# Volunteers

- **71% of pantries and 100% of the kitchens are operated totally by volunteer staff**
- **70% of our partner agencies are faith-based or private non-profit organizations.**

