

Hunger in America 2006

Macomb County Report

Presented by

*Gleaners Community
Food Bank of
Southeastern
Michigan*





nourishing communities by feeding hungry people



...a community effort



- ❖ Provide food and grocery items to 418 partner agencies across six counties
- ❖ Provide 617,233 pounds of food or 474,794 meals annually to hungry people in Macomb County.
- ❖ Engage the help of over 14,000 volunteers to help our mission

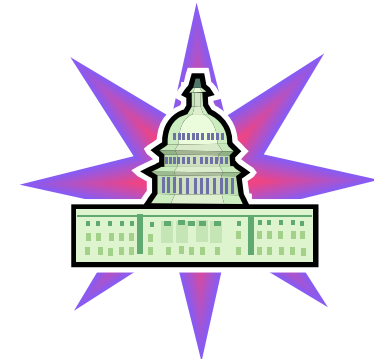
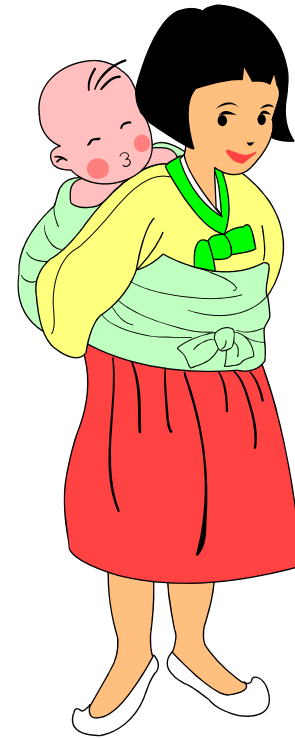
Why Do this Study?



- How many people need food?
- Who are our customers?
- Why do people need food?
- What public programs do they use?

Stakeholders –there are many

- Human Service Providers
- Policy Makers
- Donors
- Volunteers
- Tax Payers
- Food Industry
- Faith based Organizations
- Educators



Most Comprehensive National Assessment of Hunger Ever

- 156 Food Banks
- 30,000 agencies
- 52,000 clients
- Provides county, state and national reports

Study Designed by
Mathematica Policy Research, Inc. and implemented in partnership
with Wayne State University

Study Design and Process

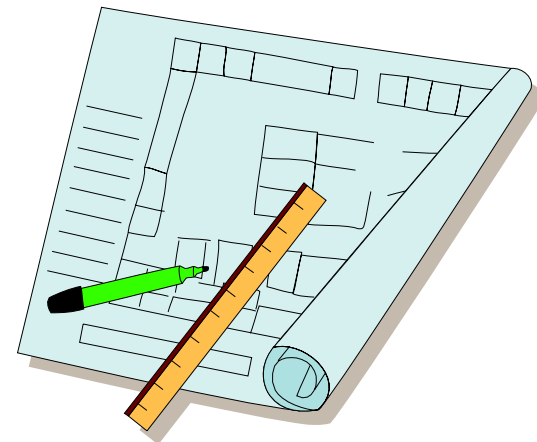
Macomb County

Partner Study

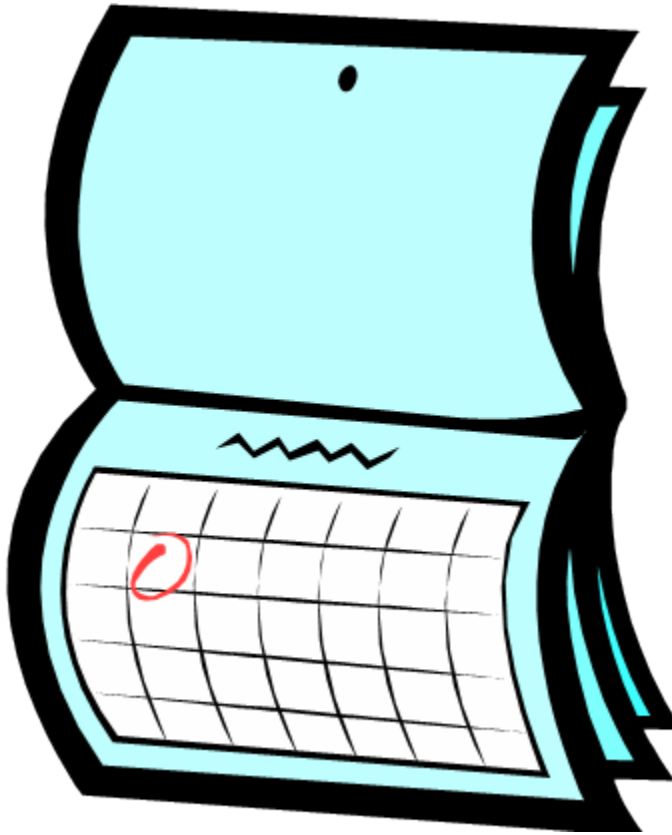
- Mail survey
- 22 responses

Client Study

- 165 Personal Interviews



Timeline



- Data Collected
Jan-April, 2005
- Sluggish economic
environment in MI
- Prior to Hurricanes
Katrina and Rita

What information did we get?

Agency Survey

- Demand changes
- Capacity
- Volunteers

Client Interviews

- Personal and Household data
- Demographics
- Food security
- Other resources



- **Gleaners Community Food Bank of Southeastern Michigan serves an estimated 38,500 different people in Macomb County annually.**
- **Approximately 8,300 different people receive assistance in any given week.**
- **2,324 Macomb County children are served through the food bank**

Households

Of those Macomb County households served by Gleaners Community Food Bank of Southeastern Michigan:

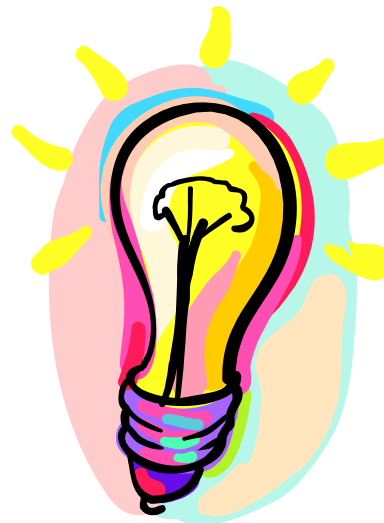


- 68% live at or below poverty level
- 35% are single person households
- 11% are homeless
- 8% include an elderly person
- 24% have no car
- 33% include children
- 69% are between ages 18 and 64
- Average annual household income is \$14,420

Poverty Level is \$19,200
for a family of four

Difficult Choices

- 54 % choose between food and utilities
- 50% choose between food and housing
- 48% choose between food and medical care



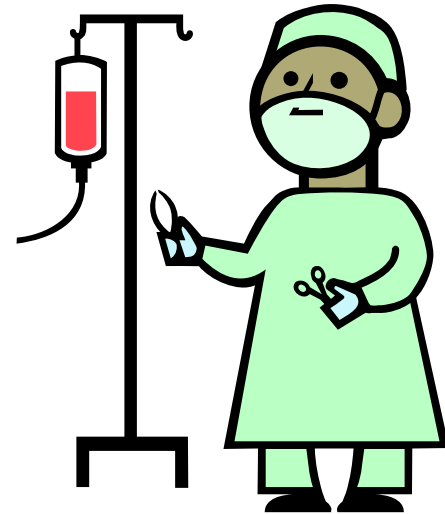
WORK & EDUCATION

- 53% of households include at least one employed adult
- 21% of clients held managerial or professional jobs
- 46% of clients completed high school and 22% have some college or a two-year degree



Health

- **31% of households have at least 1 person in poor health**
- **50% of clients have unpaid medical bills**
- **65% of households reported that sometimes or often they could not afford to eat balanced meals.**
- **19% have no medical insurance**



Resources and Programs

Of those households interviewed:

- **33% use food stamps**
- **43% school lunch**
- **30% school breakfast**

Increase in demand

- 70% of pantries, 50% of kitchens, and 100% of shelters reported an increase since 2001 in the number of people requesting food.
- 50% of pantries, 25% of kitchens, and 25% of shelters turned away clients last year because of lack of resources.

Volunteers

- **65% of pantries and 50% of the kitchens are operated totally by volunteer staff**
- **91% of our partner agencies are faith-based or private non-profit organizations.**

