

Hunger in America 2006

Oakland County Report

Presented by

*Gleaners Community
Food Bank of
Southeastern
Michigan*





nourishing communities by feeding hungry people



...a community effort



- ❖ Provide food and grocery items to 418 partner agencies across six counties
- ❖ Provide 4,817,479 pounds of food or 3,705,753 meals annually to hungry people in Oakland County.
- ❖ Engage the help of over 14,000 volunteers to help our mission

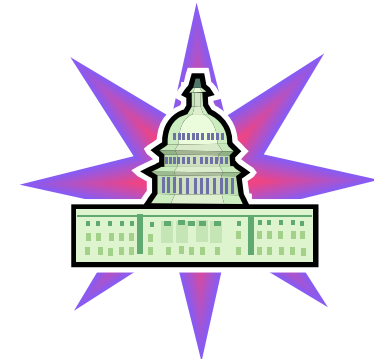
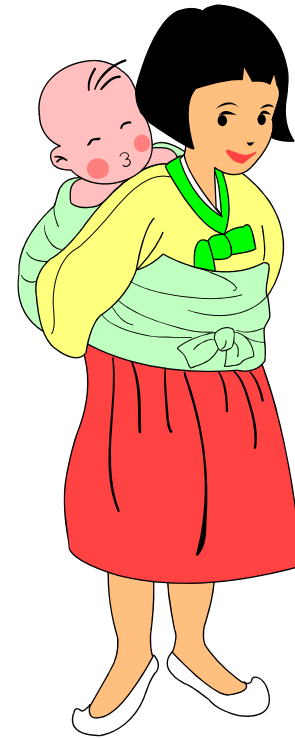
Why Do this Study?



- How many people need food?
- Who are our customers?
- Why do people need food?
- What public programs do they use?

Stakeholders –there are many

- Human Service Providers
- Policy Makers
- Donors
- Volunteers
- Tax Payers
- Food Industry
- Faith based Organizations
- Educators



Most Comprehensive National Assessment of Hunger Ever

- 156 Food Banks
- 30,000 agencies
- 52,000 clients
- Provides county, state and national reports

Study Designed by
Mathematica Policy Research, Inc. and implemented in partnership
with Wayne State University

Study Design and Process

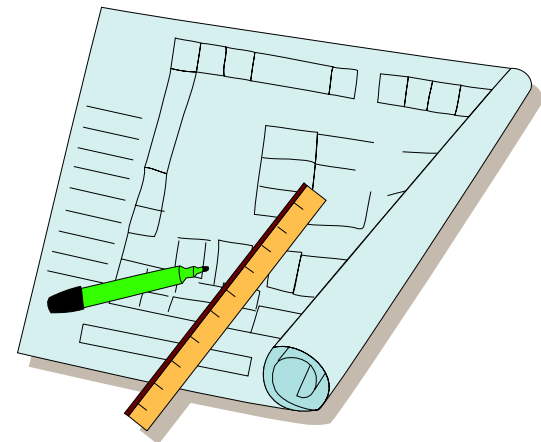
Oakland County

Partner Study

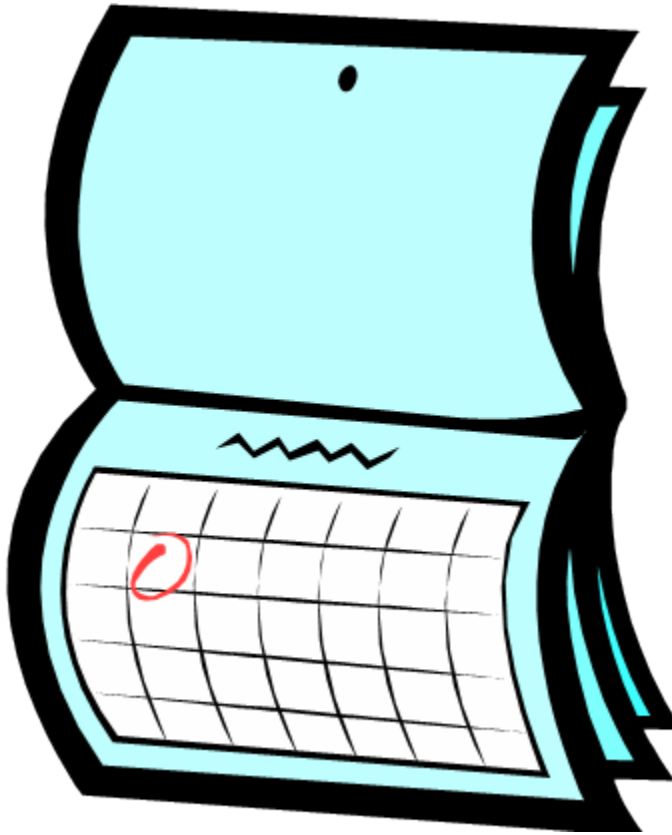
- Mail survey
- 91 responses

Client Study

- 309 Personal Interviews



Timeline



- Data Collected
Jan-April, 2005
- Sluggish economic
environment in MI
- Prior to Hurricanes
Katrina and Rita

What information did we get?

Agency Survey

- Demand changes
- Capacity
- Volunteers

Client Interviews

- Personal and Household data
- Demographics
- Food security
- Other resources



- **Gleaners Community Food Bank of Southeastern Michigan serves an estimated 28,108 different people in Oakland County annually.**
- **6,241 different people receive assistance in any given week.**
- **10,118 Oakland County children are served through the food bank**

Households

Of those Oakland County households served by Gleaners Community Food Bank of Southeastern Michigan:

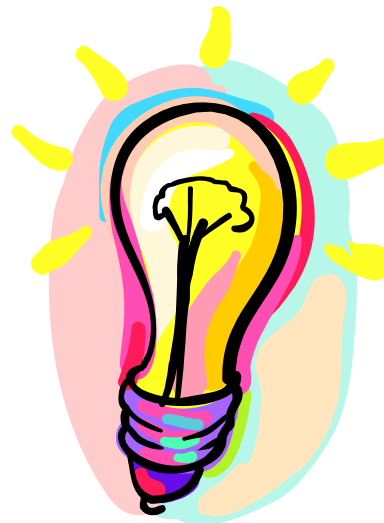


- 62% live at or below poverty level
- 44% include children
- 15% include an elderly person
- 39% have no car
- 58% are between ages 18 and 64
- Average annual income is \$15,320

Poverty Level is \$19,200
for a family of four

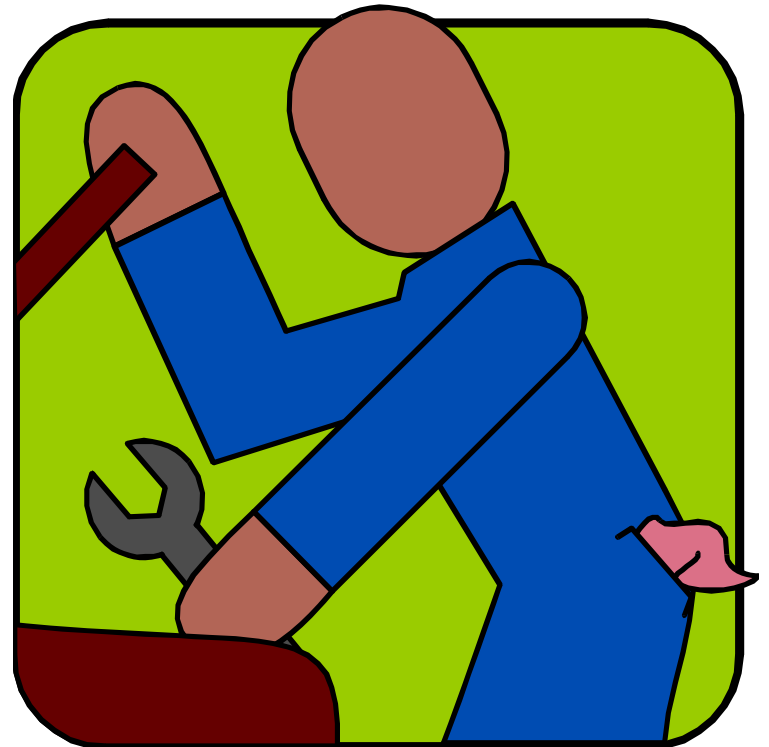
Difficult Choices

- 40% choose between food and utilities
- 35% choose between food and housing
- 40% choose between food and medical care



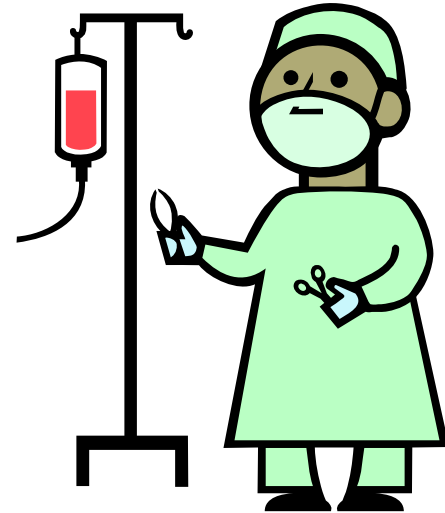
WORK & EDUCATION

- 40% of households include at least one employed adult
- 13% of clients held managerial or professional jobs
- 42% of clients completed high school



Health

- **23% of households have at least 1 person in poor health**
- **56% of clients have unpaid medical bills**
- **71% of the households reported that often or sometimes they could not afford to eat balanced meals**
- **10% have no medical insurance**



Resources and Programs

Under-utilized

Of those households interviewed:

- **43% use WIC**
- **Only 37% use food stamps**
- **57% school lunch**
- **32% school breakfast**

Increase in demand

- 71% of pantries, 37% of kitchens, and 58% of shelters reported an increase since 2001 in the number of people requesting food.
- 23% of pantries, 12% of kitchens, and 28% of shelters turned away clients last year because of lack of resources.

Volunteers

- **69% of pantries and 26% of the kitchens are operated totally by volunteer staff**
- **91% of our partner agencies are faith-based or private non-profit organizations.**

