

Hunger in America 2006

Wayne County Report

Presented by

*Gleaners Community
Food Bank of
Southeastern
Michigan*





nourishing communities by feeding hungry people



...a community effort



- ❖ Provide food and grocery items to 418 partner agencies across six counties
- ❖ Provide 17,824,795 pounds of food or 13,711,380 meals annually to hungry people in Wayne County.
- ❖ Engage the help of over 14,000 volunteers to help our mission

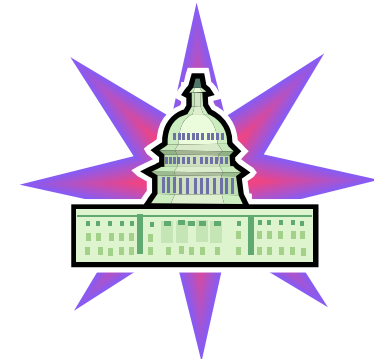
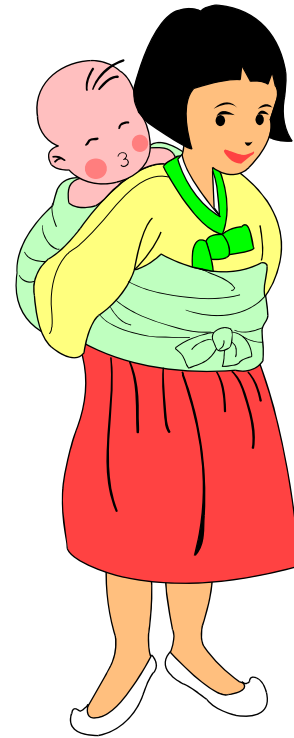
Why Do this Study?



- How many people need food?
- Who are our customers?
- Why do people need food?
- What public programs do they use?

Stakeholders –there are many

- Human Service Providers
- Policy Makers
- Donors
- Volunteers
- Tax Payers
- Food Industry
- Faith based Organizations
- Educators



Most Comprehensive National Assessment of Hunger Ever

- 156 Food Banks
- 30,000 agencies
- 52,000 clients
- Provides county, state and national reports

Study Designed by
Mathematica Policy Research, Inc. and implemented in partnership
with Wayne State University

Study Design and Process

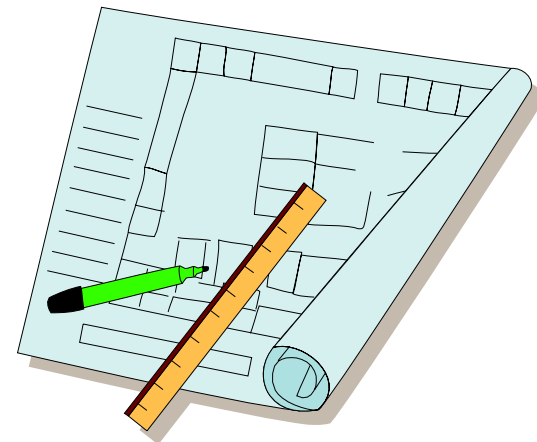
Wayne County

Partner Study

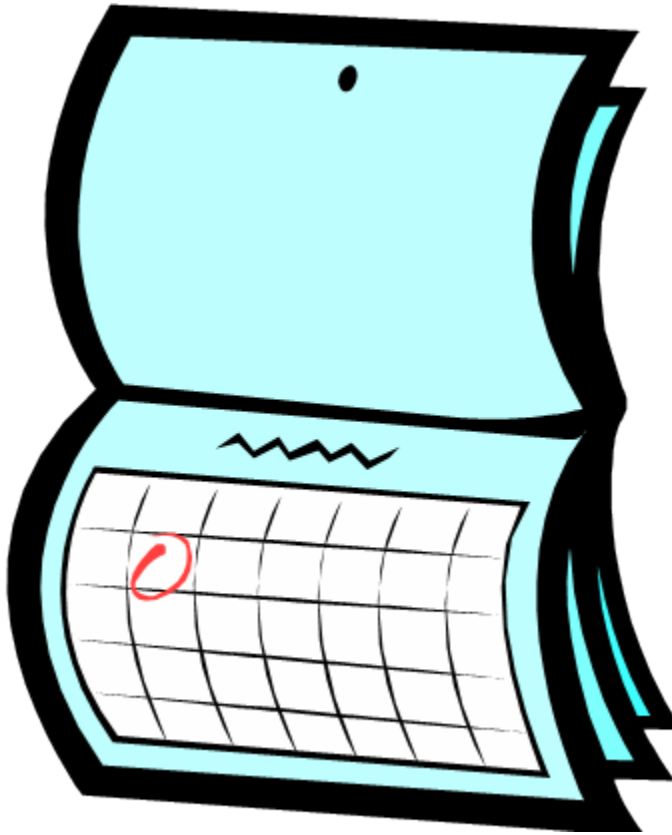
- Mail survey
- 211 responses

Client Study

- 305 Personal Interviews



Timeline



- Data Collected
Jan-April, 2005
- Sluggish economic
environment in MI
- Prior to Hurricanes
Katrina and Rita

What information did we get?

Agency Survey

- Demand changes
- Capacity
- Volunteers

Client Interviews

- Personal and Household data
- Demographics
- Food security
- Other resources



- **Gleaners Community Food Bank of Southeastern Michigan serves an estimated 209,700 different people in Wayne County annually.**
- **Approximately 45,200 different people receive assistance in any given week.**
- **48,231 Wayne County children are served through the food bank**

Households

Of those Wayne County households served by Gleaners Community Food Bank of Southeastern Michigan:

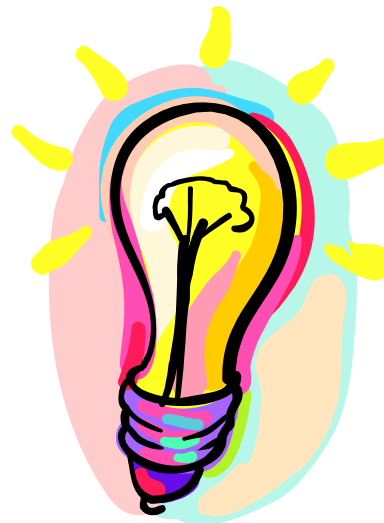


- 75% live at or below poverty level
- 55% are single person households
- 17% are homeless
- 11% include an elderly person
- 51% have no car
- 22% include children
- 70% are between ages 18 and 64
- Average annual household income is \$8,910

Poverty Level is \$19,200
for a family of four

Difficult Choices

- 30% choose between food and utilities
- 27% choose between food and housing
- 26% choose between food and medical care



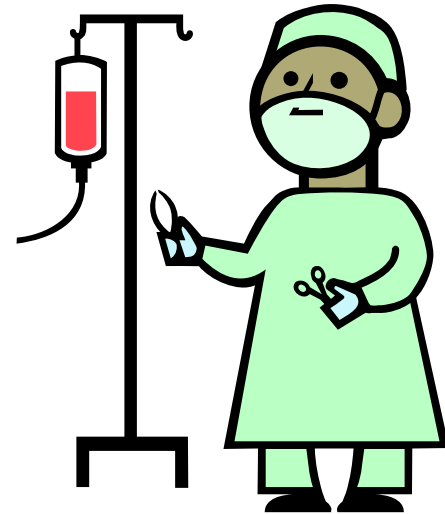
WORK & EDUCATION

- 33% of households include at least one employed adult
- 13% of clients held managerial or professional jobs
- 39% of clients completed high school and 26% have some college or a two-year degree



Health

- **26% of households have at least 1 person in poor health**
- **44% of clients have unpaid medical bills**
- **70% of households reported that sometimes or often they could not afford to eat balanced meals.**
- **30% have no medical insurance**



Resources and Programs

Of those households interviewed:

- **41% use food stamps**
- **69% school lunch**
- **51% school breakfast**

Increase in demand

- 66% of pantries, 79% of kitchens, and 78% of shelters reported an increase since 2001 in the number of people requesting food.
- 45% of pantries, 25% of kitchens, and 39% of shelters turned away clients last year because of lack of resources.

Volunteers

- **69% of pantries and 29% of the kitchens are operated totally by volunteer staff**
- **94% of our partner agencies are faith-based or private non-profit organizations.**

